

## WISD is accountable to its stakeholders.

WISD has a multi-faceted accountability system including:

- A countywide special education plan that is reviewed and approved by local districts
- A countywide Parent Advisory Committee that reviews the special education plan and meets regularly to discuss special education issues.
- The Washtenaw Association of School Boards
- The Washtenaw County Superintendents' Association which has:
  - A Six Point Plan—developed with the local schools
  - An Annual Budget Review
- The Special Education Administrators who meet monthly to ensure cooperative planning and effective, efficient and equitable service
- The WISD 20/20 Long-Range Plan that is published and reviewed
- The WISD Board Goals that are set and published annually
- The High Point Parent/Staff Organization which meets regularly
- Individual Education Planning meetings that are held with parents and professionals to plan student programs
- Independent financial auditors who review WISD's books annually
- The Michigan Department of Education (MDE) that monitors WISD programs to ensure compliance with the law
- MDE state reports completed quarterly, annually or as required
- Advocacy groups/associations that are dedicated to ensuring that individuals with special needs receive appropriate services



WISD is also accountable under these State and Federal laws:

- Open Meetings Act
- Annual public budget hearings
- Local school district review of WISD budget
- Freedom of Information Act
- School Code
- Individuals with Disabilities Education Improvement Act, and
- Michigan's Rules for Special Education

## Taxpayers make WISD services possible.

Under the law, ISDs can levy millages (taxes approved by voters) to help fund programs for general, special and vocational/technical education programs. They may also levy, with voter approval, an enhancement millage. WISD is funded, in part, by millage that is levied for its general and special education programs, only. **The 2009-2010 mills levied for WISD (with the Headlee rollback) is the same as last year:**

General Education	.0984 (approved for 0.12 mill)
Special Education	<u>3.8761</u> (approved for 4.5 mills)
<b>Total mills levied</b>	<b>3.9745</b>

WISD receives a fraction of a mill to fund its general education services like school improvement, professional development, assessment services, curriculum support, and compliance with the No Child Left Behind Act. The allocated or approved amount of 0.12 mill can be (and has been) decreased or rolled back under a provision in the law called the Headlee Amendment.

WISD also levies a millage to fund countywide special education services. This millage, which is also subject to the Headlee rollback, can be increased by a vote of the people. It supports programming for the nearly 7,000 students who receive special education services in the 10 local school districts of Ann Arbor, Chelsea, Dexter, Lincoln, Manchester, Milan, Saline, Whitmore Lake, Willow Run and Ypsilanti and nine public school academies.

## This is the WISD Board of Education.

Mark Van Bogelen, President  
Gregory A. Peoples, Vice President  
Dayle K. Wright, Secretary  
Diane B. Hockett, Treasurer  
Mary Jane Tramontin, Trustee  
Dr. William C. Miller, Superintendent

For more information, call: (734) 994-8100, ext. 1321  
or visit: <http://www.wash.k12.mi.us>.

## Administrative Services

These services include personnel, government relations, evaluation, communications, policy, work with boards of education and community partnerships.

### Providing coordination, information, advocacy and support

- Washtenaw Superintendent's Association – coordination
- Washtenaw Association of School Boards – coordination
- Washtenaw County Personnel Association – coordination
- Washtenaw County High School Principals Association – coordination
- Special Education Administrators – coordination
- Parent Advisory Committee (PAC) – coordination
- Effective Practices/Assessment Workgroup – coordination
- Regional Educational Media Center coordination



- Region 8 Government relations services – provided
- Public relations – Adequate Yearly Progress/No Child Left Behind
- Media relations – countywide general/special education issues
- Elections support – bond and sinking fund information/support
- Adult and Community Educators – support of countywide group
- Annual Reports – information and support
- Home Schooling – information
- School Safety – information and support
- Technology Administrators – information and support
- Personnel/staffing – assistance for local school districts, including:
  - Fingerprinting and background checks
  - Compliance training (e.g. bloodborne pathogens, sexual harassment, hazard communications)
  - WISD employees contracted to local districts
  - Job descriptions/Job postings
  - Recruitment/Hiring
  - Interviewing/Reference checks
  - Presentations and information on personnel issues
  - Substitute employee calling and contracting
  - Online applicant tracking program
- Community Partnerships – WISD represents public school districts on the following community boards/coalitions:
  - Building Restorative Justice and Juvenile Drug Court
  - Washtenaw County Community Collaborative
  - Center for Occupational and Personalized Education
  - Workforce Development Education Advisory Board
  - Washtenaw Success By 6 Early Childhood Collaborative
  - Michigan Alliance for Families
  - NAAPID - Parent Involvement
  - Washtenaw Birth to Six Interagency Collaboration
  - START Regional Collaboration
  - Education Project for Homeless Youth/Foster Youth School Stabilization Projects
  - Health Emergency Response Coalition membership

## Education Support (continued)

WISD services in this division include business services, data management, and technology support to local school districts.



### Technology Services

- Assists with submission process for required state reporting:
  - ❑ Student Data System (SDS)
  - ❑ School Infrastructure Database (SID)
  - ❑ Registry of Educational Personnel (REP)
  - ❑ Financial Information Database (FID)
  - ❑ Michigan Education Information System (MEIS)
  - ❑ Michigan Education Grant System (MEGS)
  - ❑ Unique Identifier Code (UIC) support
- Maintains student management software including:
  - ❑ Michigan Compliance Information System (MI-CIS) for children ages 0-3 using Early On services
- 0-3 Child Outcome Data System
- Maintains WISD-created tools for Early Childhood programs
- Services countywide programs including:
  - ❑ Technology Planning and Consultation
  - ❑ Countywide Fiber Network – maintenance/operation
  - ❑ Universal Service Fund (USF) – primary program resource
  - ❑ Video Bridging Services
  - ❑ Provide access to Internet 2

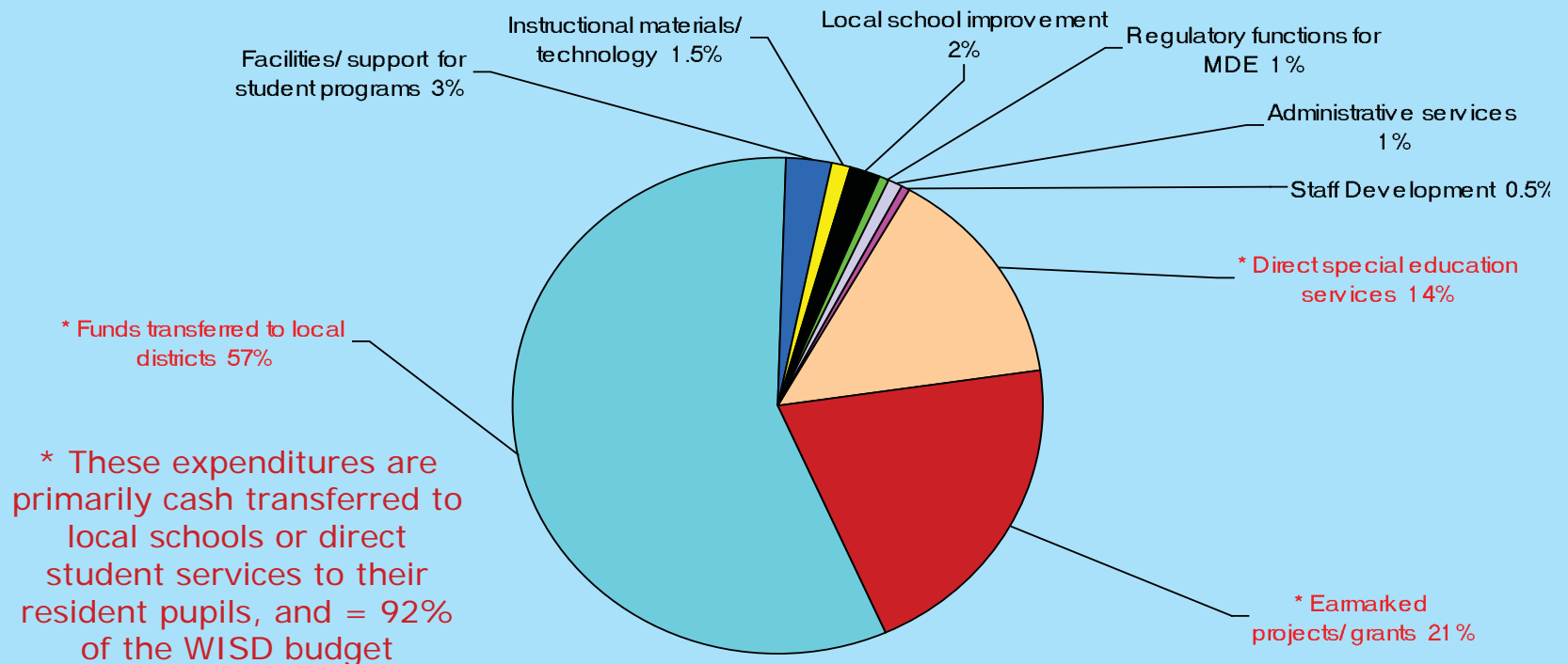
- Consolidated Student Management System (Power School)
- Consolidated Library Management System (Destiny)
- Versatran Transportation System
- Technology Management
  - ❑ Manages protocol traffic/ blocks network traffic as requested
  - ❑ Pays for countywide Internet access (valued at \$158,360)
  - ❑ Serves as first line support for spam blocking
  - ❑ Assists districts track security breaches and virus attacks
  - ❑ Provides network analysis tool, Packetshaper
  - ❑ Help Desk Ticketing System
  - ❑ Financial system hosting
  - ❑ Coordination of technology service contracts, as needed
- ❑ Content Filtering
- ❑ IP address space management
- ❑ Domain Name Service - funding and management
- ❑ Server Access to Special Ed Software-Manchester/Saline
- ❑ Wireless Washtenaw Representation
- ❑ WAN router replacement and maintenance
- ❑ Virtual Server Space and Training
- ❑ Black list for district proxy servers
- ❑ Redundant Internet service link
- ❑ WAN Fiber maintenance and troubleshooting
- ❑ Numerous shared consolidated services (student, financial, and administrative)

### WISD's employees serve:

- more than 47,000 students in 10 communities
- about 4,800 public school employees in 100 buildings including teachers, principals, administrators, aides, secretaries and bus drivers
- more than 70 public school board members
- 10 public school districts
- 9 public school academies
- 21 non-public schools.

For more information call (734) 994-8100, ext. 1321,  
or visit: <http://www.wash.k12.mi.us>.

# WISD Expenditures 2009-10



## Education Support

WISD services in this division include business services, data management, and technology support to local school districts.

### Business Services

- Outgoing transfer of funds to local school districts for programs and services of more than **\$60 million**
- Funded projects and grants to local schools
- Center for Occupational and Personalized Education (C.O.P.E.) coordination and fiscal agent
- Van services provided for interschool communication delivery as part of countywide system
- Medicaid billing
- Business services provided under contract to local schools and public school academies

### State-Mandated Services

- Pupil accounting
- Pupil auditing
- Compliance monitoring – special education
- Complaints – special education
- Technical assistance for mediations – special education
- Technical assistance/rules/due process – special education
- Special education personnel registry
- Consolidated grant administration

## Achievement Initiatives

These programs impact student achievement including staff development, school improvement, curriculum support, assessment, early childhood and information resources for instruction.

### Professional Development: Special Education

- Disability awareness and instructional strategies
- Para professional training
- Bus driver special education training
- Michigan Alliance for Families – materials and support for parents of students with disabilities
- MI-Access – training/support
- Crisis Prevention and Intervention (CPI)/Positive Behavior Supports training
- Coordinated training for evaluations for students with autism
- Hanen speech and language program – parent and staff training
- Special Education Individual Education Planning and Mediation Training
- START regional collaboration
- START intensive training and support for students with autism
- Provide facilities for specialized evaluations
- Assistive technology materials, training and support
- Coordinate site training for START
- Statewide autism resources and training
- Support and training on moni-

toring compliance

- Build skills and capacity through professional development and continuous mentoring support

### Professional Development: General Education

- Bus driver-training: mandatory/beginning/advanced
- State Board Continuing Education Units record keeping/transcripts
- Data analysis training and support
- No Child Left Behind/Adequate Yearly Progress (NCLB/AYP) – inservice training and materials
- Online Learning
- Bi-lingual/English-as-a-Second-Language services – training, support and coordination
- Data Director – training and support
- Adolescent Literacy training and support
- Mathematics training and support

### Professional Development: Technology

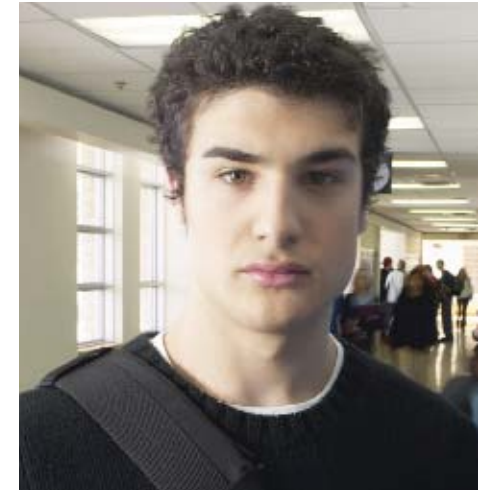
- Video streaming integration and technical training
- Online learning environments

training and support

- Interactive Television/Video-conferencing
- Medicaid billing system training/Excent Tera
- Unique Student Identifier training
- Server virtualization training
- Technology Planning training
- PowerSchool – student information management system training

### Teaching Materials and Media

- Teacher workroom
- Online library of assistive technologies and materials
- Digital technologies including: Streaming Video, Digital Media subscriptions, Web Streaming and United Streaming
- Moodle Content Management for Distance Learning
- Access to online courses
- Cooperative purchasing through the Regional Educational Media Center (REMC) bid – saved districts in Washtenaw and Livingston counties \$4,661,028. in equipment and supplies purchased in 2009-10. As a result, REMC 16 received the Highest Percentage of Savings State-wide Award.



### School Improvement

- Assistance for No Child Left Behind “priority schools”
- Leadership and Design Team Institute
- Assessment Services – evaluation/MEAP administration/data analysis
- Grant writing assistance
- Mathematics support and literacy
- First Steps Washtenaw/Early On funding/coordination/program development with Success By 6®
- Leadership Academy
- Instructional Consultation Teams
- Literacy support
- Assist schools identified with disproportionality issues

## WISD responds to individual district needs.

WISD is open to requests for school district and/or school-specific services within its broader, countywide focus. This allows WISD to customize its services to best meet the needs of its member schools, students, staff, parents and community. WISD staff members work in four major service divisions: **School Support Services**, **Achievement Initiatives**, **Education Support** and **Administrative Services**. Within the past year, through its four divisions, WISD has delivered the following major programs and/or services to public schools in Washtenaw County.

### School Support Services

**These education programs and services serve students directly.**

#### Special Education

- WISD-operated classroom programs and services
- WISD juvenile detention, day treatment and day break classes
- WISD teacher consultants
- Assistive technology – consultation/capacity building/short and long-term equipment loans
- First Steps Washtenaw/Early On-prevention/at risk 0-3 year olds coordination
- Great Parents Great Start – bilingual parent educators
- Good Start support to preschools
- Supplemental psychological/social work evaluations for students with special needs
- Young Adult Transition Services – coordinated with local districts, Michigan Rehabilitation Services, and other adult service agencies

University Musical Society (UMS) – coordination of events

Senior Exit Survey – conducted, analyzed for all secondary schools

#### Technology-delivered Instructional Services

- Early College Alliance
  - Project Development
  - Grant Management
  - Fiscal Agent
- Moodle online learning management system
- Moodle online classroom environment
- Video streaming of educational content
- Eighth grade technology assessment
- Career Forward for career exploration
- Online digital reference resources – United Streaming; Michigan eLibrary
- Widening Advancement for Youth–WAY Washtenaw
- MI–Online Learning
- Michigan Virtual University
- GenNET

## WISD supports students with special needs.

Almost 7,000 (out of nearly 48,000) students in Washtenaw County are identified as needing special education services. The following chart shows the number of students receiving special education services in each district:

<u>School District</u>	<u>Number of students receiving special education services</u>
Ann Arbor	2,170
Chelsea	350
Dexter	430
Lincoln	846
Manchester	155
Milan	348
Saline	772
Whitmore Lake	224
Willow Run	355
Ypsilanti	804
WISD	249 (from all districts)
Public School Academies	259
<b>Total</b>	<b>6,962*</b>

WISD provides funding for special education administrative services and special education support services for children with disabilities. Support services specialists work with the child's teacher to make sure that each child receives the best education possible. These specialists include:

- ❖ School social workers.
- ❖ School psychologists.
- ❖ Teacher consultant services for students with special education needs placed in general education classrooms.
- ❖ Orientation and mobility specialists for children who are blind or have vision problems.
- ❖ Speech therapists.
- ❖ Occupational therapists.
- ❖ Physical therapists.
- ❖ Special Education administrators.

\*(12/1/09 unduplicated, unaudited count: Michigan Department of Education)



**W**ashtenaw Intermediate School District (WISD) provides quality programs and services for the students, parents, staff and communities within the public school districts of: Ann Arbor, Chelsea, Dexter, Lincoln, Manchester, Milan, Saline, Whitmore Lake, Willow Run, Ypsilanti and nine public school academies. To learn more, visit <http://www.wash.k12.mi.us>.

## We're Your Educational Service Agency.

**T**he Michigan legislature created 57 intermediate school districts in 1962 to help local school districts maximize resources—so that local schools could deliver the best possible education for students. This charge is even more critical today as ISDs work together with their local school districts to provide an array of programs and services tailored to meet the ever-changing needs of local schools.

Locally, for more than 45 years, Washtenaw Intermediate School District has worked with its member school districts—**collectively and individually**—to help meet the needs of their students, parents, support staff, teachers, administrators and board members.

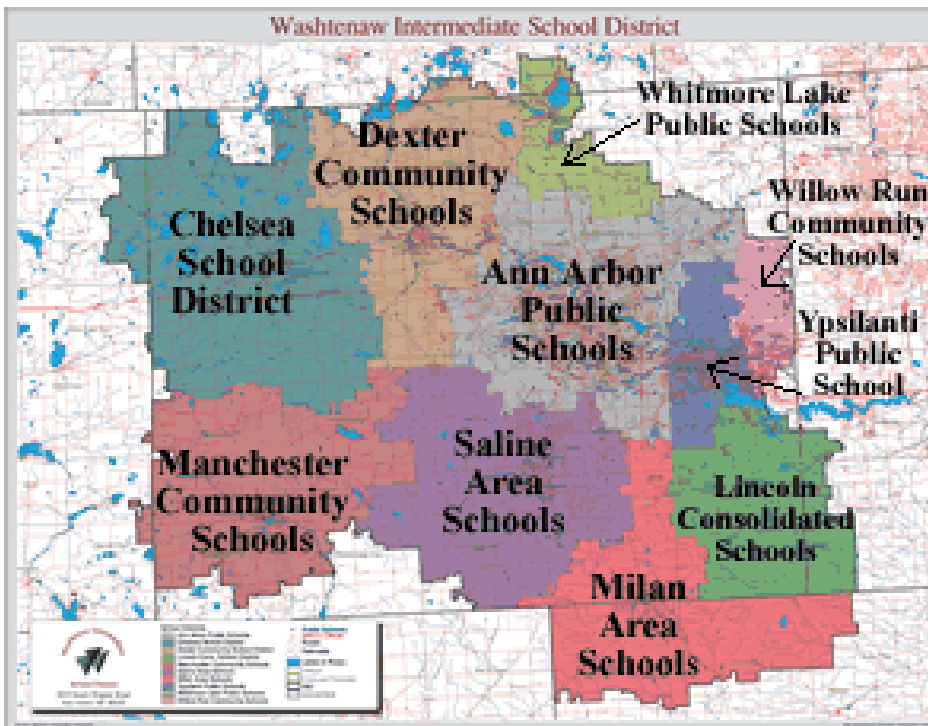
## We're working together for student success.

**G**uided by the **Washtenaw County Expectations for Student Learning** adopted by the Washtenaw County Superintendents' Association, Washtenaw Intermediate School

District:

- ◆ provides local school districts with school improvement consultation, assessment services, curriculum and instructional services to support improved student achievement.
- ◆ offers the latest workshops, seminars and classes for teachers, administrators, transportation department staff, bus drivers, secretaries, board members, other school staff and parents, featuring up-to-date technologies, techniques and methods.
- ◆ provides consultant assistance, research assistance and resources including Internet access, digital video, student learning systems and assistive technology.
- ◆ coordinates programs and services that are too expensive for a single school district to operate or that are very specialized and serve only a few students, including direct educational services for youth/adults with special needs from birth through age 26.
- ◆ performs regulatory functions on behalf of the Michigan Department of Education including pupil accounting and special education monitoring and compliance.

For more information, call: (734) 994-8100, ext. 1321,  
or visit: <http://www.wash.k12.mi.us>.





**Washtenaw  
Intermediate  
School District**

Annual  
Services Report  
2009-10

*featuring programs and services in the  
public schools of Washtenaw County*